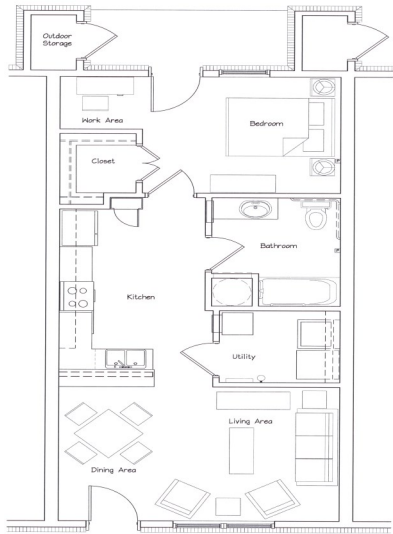
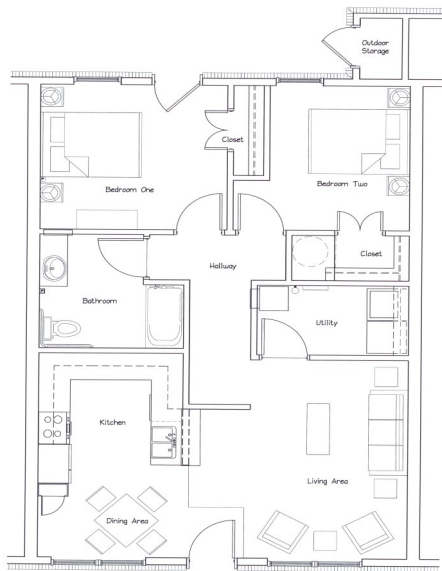
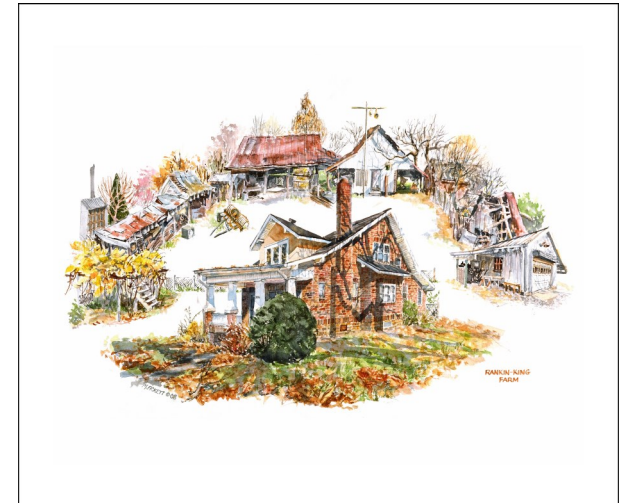
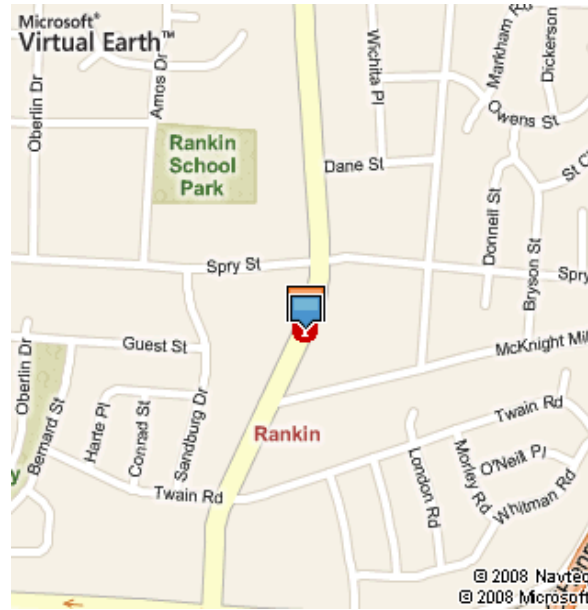


Rankin King Farm

1600 Rankin King Drive
Greensboro, NC 27405



ONE BEDROOM OPTION



TWO BEDROOM OPTION



EQUAL HOUSING OPPORTUNITY



Beacon Management Corp.
408 Battleground Avenue
Greensboro, NC 27401

(336) 545-9000

1600 Rankin King Drive
Greensboro, NC 27405
336-954-5000

rankinking@beacon-nc.com

Rankin King Farm

Rankin King Farm is a well designed, quaint apartment community for seniors located in an ideal setting of northeast Greensboro. The development is situated in a quiet neighborhood with close proximity to shopping, banking, services, restaurants, churches and major highways.

Rankin King Farm's architecture has been carefully planned to represent its rich history. However, the facilities are designed with modern amenities in mind, including safety, convenience, comfort and affordability.

Beautiful one and two bedroom apartments make up the layout of the complex. The one and two bedroom dwellings offer spacious bedrooms and all units offer non-ambulatory ground level access with a variety of security features. Each residence has

a nice size living room and is individually regulated with its own heating and air conditioning systems. There is also a work area provided in the one-bedroom units with ample room for a computer or anything else our tenants would like to set up. Kitchens are fully equipped with range, refrigerator, and dishwasher for a feeling of home, with washer and dryer connections available. For those lovely spring and autumn days and evenings, each household offers a personal patio space with storage.

The community center is a renovated Craftsman house built in the late 1920s adorned with pictures from the property that gives a glimpse into the past. Although this fine looking building was restored with the history of the property in mind it offers several contemporary features including an activity room, coin-operated laundry, resident computer center and an on-site management office.

If you are age 55 and older, you can make this attractive spot your new home. This moderately priced development offers comfortable living without the large price tag. If you have any questions or would like more information on leasing opportunities, please contact us at the management office at:

Rankin King Farm
1600 Rankin King Drive
Greensboro, NC 27405
336-954-5000

rankinking@beacon-nc.com

We look forward to talking with you about your new home!